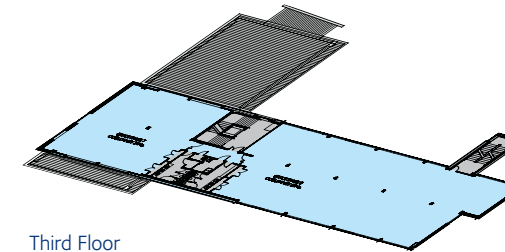


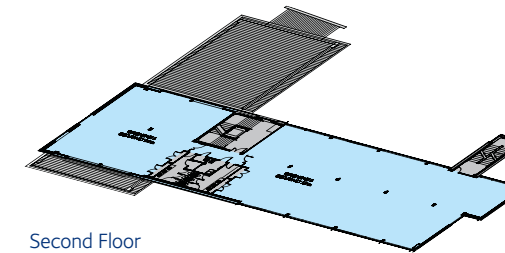
# HILBRE@RIVERSIDE PARK

## Current Availability

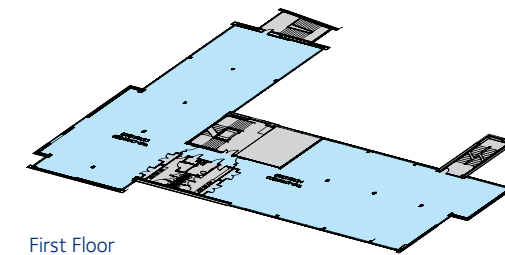
FLOOR	UNIT	SQ M	SQ FT
Ground Floor	Suite 1	397.35	4,277
Ground Floor	Suite 2	377.92	4,068
First Floor	Suite 3	397.62	4,278
First Floor	Suite 4	386.85	4,164
Second Floor	Suite 5	194.07	2,089
Second Floor	Suite 6	430.14	4,630
Third Floor	Suite 7	194.07	2,089
Third Floor	Suite 8	430.14	4,630



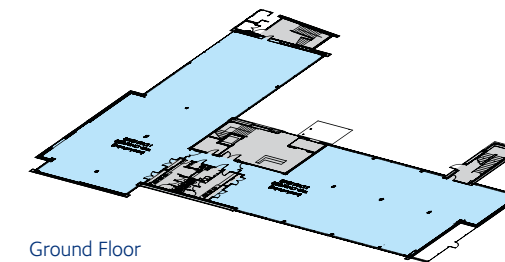
Third Floor



Second Floor



First Floor



Ground Floor

SUPPORTED BY



**MISREPRESENTATION ACT**

Mason Owen and Smith & Sons for themselves, for the vendors or lessors of this property whose agents they are, give notice that: (i) the particulars are set out as a general outline only for the guidance of intending purchase or lessors and do not constitute, nor constitute part of an offer or contract. (ii) all descriptions, dimensions, references to condition and necessary permissions for use and occupation, and other details, are given in good faith and are believed to be correct but any intended purchasers or tenants should not rely on them as statements or representations of fact but satisfy themselves by inspection or otherwise as to the correctness of each of them. (iii) no person in the employment of Mason Owen and Smith & Sons has the authority to make or give any representation or warranty whatever in relation to this property. (iv) all rentals and prices are quoted exclusive of VAT. February 2009.  
Designed and produced by CW Advertising Ltd. Tel: 01282 858200.

**mason  
owen...**  
0151 242 3000  
www.masonowen.com

**Smith  
AND SONS**  
PROPERTY CONSULTANTS  
0151 647 9272